

Acorn Park


S.no. 108/2/4,
Indira National School Road,
Wakad, Pune, Maharashtra 411057.

Contact details

+91 8007092424, +91 8007092626

GK
Projects



 RERA Reg. No. - P52100028087
RERA Reg. No. - P52100031778

... Where Luxury meets Budget

Acorn Park


PANTHEON
Associates LLP
Best Creation Is Our Devotion





Acorn Park is situated at fastest developing locality of Wakad. Its location enjoys unmatched advantage.

It is designed to match luxury and budget of the common man. With smooth and quick access to close vicinity, schools, colleges, hospitals, market, banks, malls & several other facilities will be within easy reach.

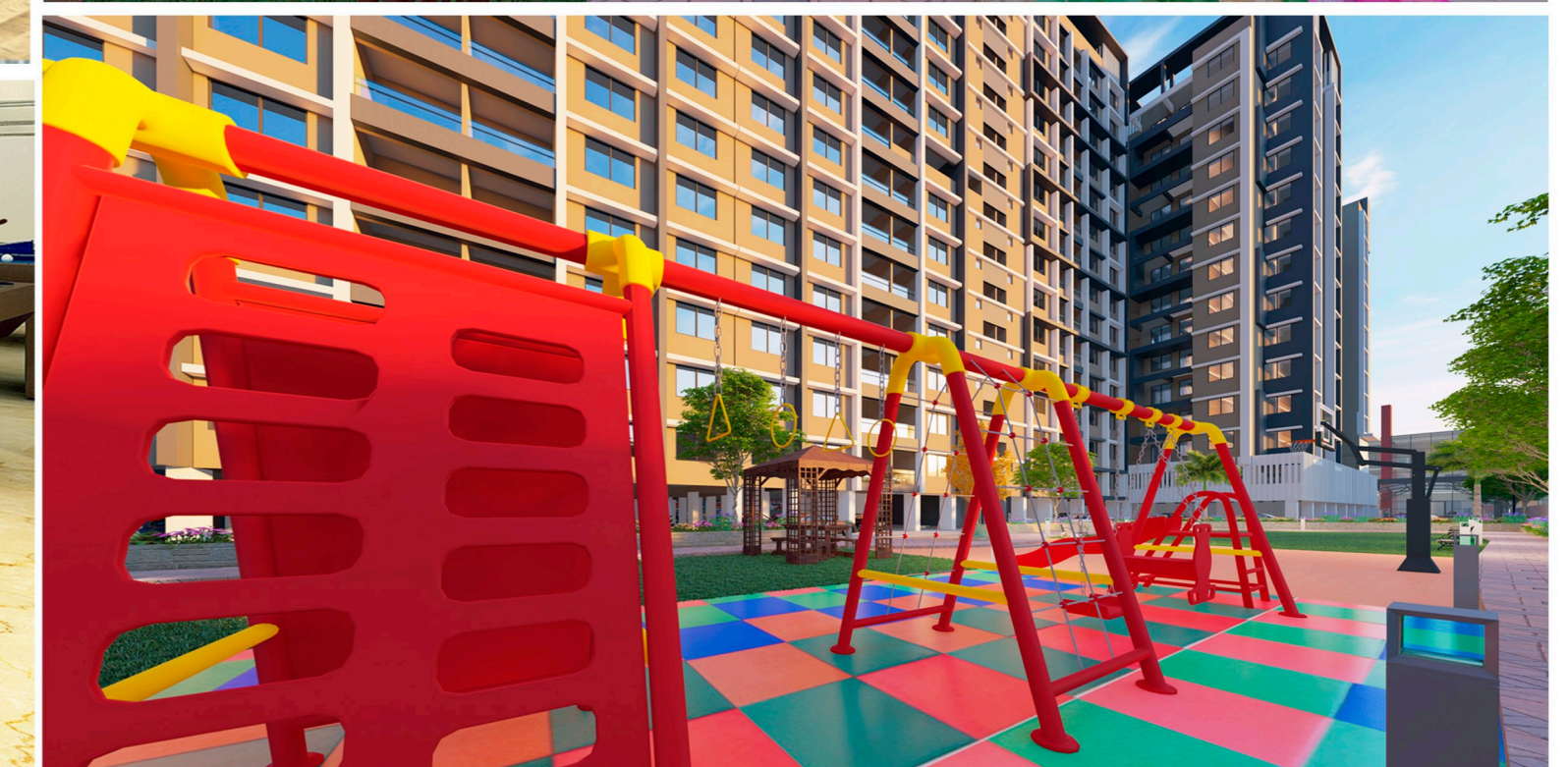
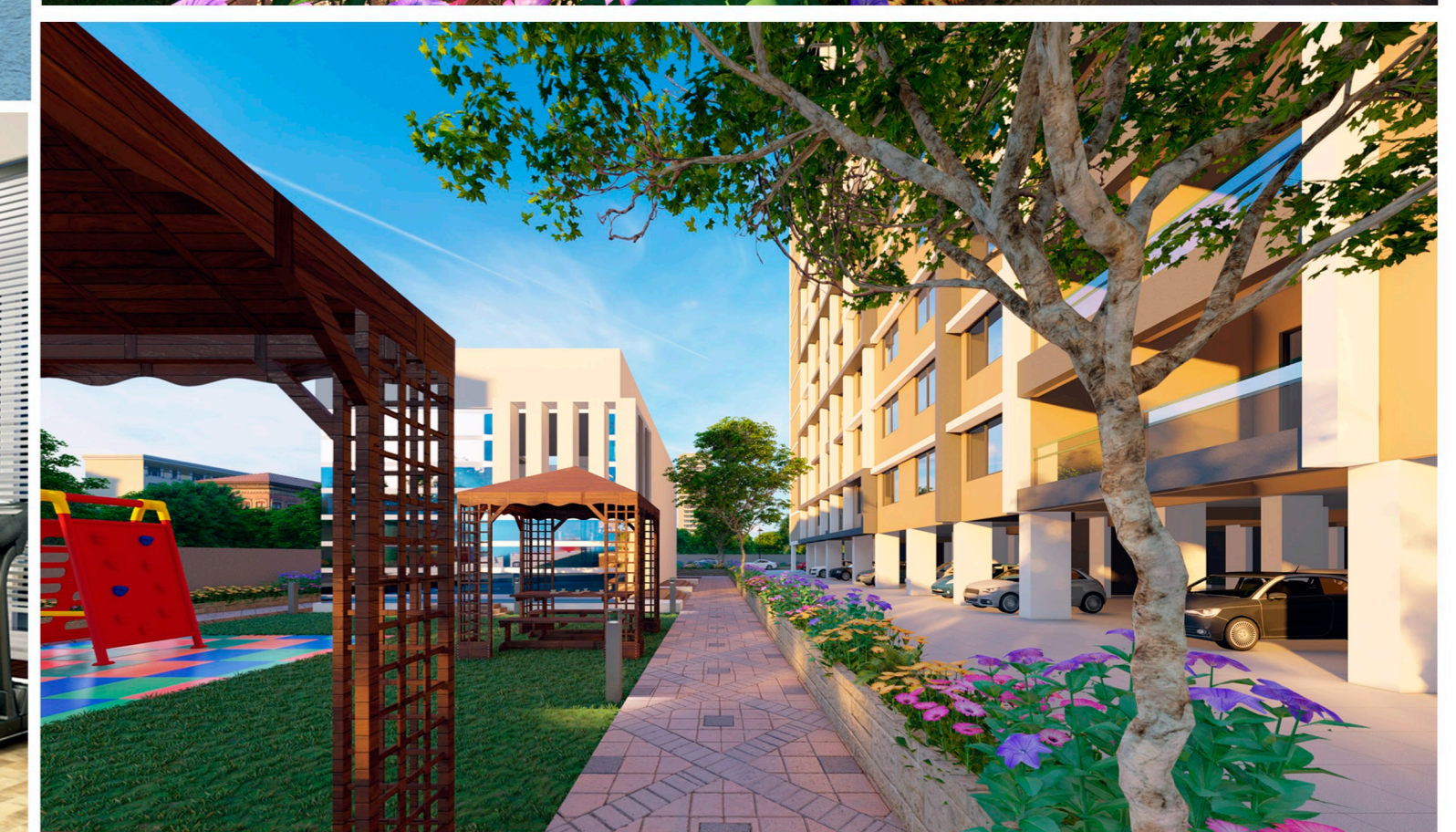
Connected Apartment Living

***Acorn
Park***

Acorn Park

Amenities

- * Club House
- * Sports Zone
- * Indoor Sports Zone
- * Outdoor Screening
- * Kids Play Area
- * Health Zone
- * Entertainment Zone
- * Jogging Track



Acorn Park



1 BHK



2 BHK



*Acorn
Park*

Acorn Park

Your apartment at Acorn Park is designed to maximize space, light & views.

The rooms are carefully proportioned to ensure good layouts. Every apartment is spacious, airy & isolated from city's hustle. Lower level apartments have the common green lawn in front while higher floors have open sky's to enjoy quite evenings.



Acorn Park



Acorn Park

Specifications

Structure

- RCC frame structure of superior quality designed for earthquake safety

Masonry

- External walls 6" brickwork
- Internal walls 6" brickwork

Plaster

- Neru / Gypsum finish plaster for internal walls
- Sand faced cement plaster for external walls

Doors

- Decorative main entrance door with standard make fittings

Windows

- Large windows for better air circulation, ventilation & view
- Powder coated 2 track or 3 track Aluminium sliding windows with Tinted glass
- M.S. Grills for safety & security
- Marble / granite window sill top

Bathrooms

- Anti-skid ceramic flooring
- Designer Glazed dado tiles upto Lintel Level
- Hindware / Jaquar or equivalent make sanitary ware
- Hot & Cold mixer for all shower areas
- Provision for geyser
- Water proof doors
- Solar heater connection for mixer unit in master toilet (for fixed timing)

flooring

- 800 x 800 vitrified tiles flooring of standard make for the entire flat
- 600 x 600 or 800 x 800 tiles in Master Bedroom

Kitchen

- Marble / granite Kitchen platform parallel / L shape
- Stainless steel sink
- Glazed Tiles dado above platform upto lintel level
- Dry terrace attached to kitchen with provision for washing machine with water inlet & drain
- Provision for water purifier

Electrification

- Adequate concealed electrical points with standard wiring
- Telephone point & cable T.V. point in living & master bedroom
- AC point in master bedroom
- Each flat with ELCB (earth-leakage circuit breaker) for electrical safety
- Inverter back up for each flat
- Modular switches

Painting

- Internal Oil bond distemper paint in the entire flat
- External Acrylic weather proof paint for the entire building

Plumbing

- Concealed plumbing
- Jaquar / Hindware / equivalent fitting in bathroom, toilet & kitchen

Letterbox

- Letter box for each flat

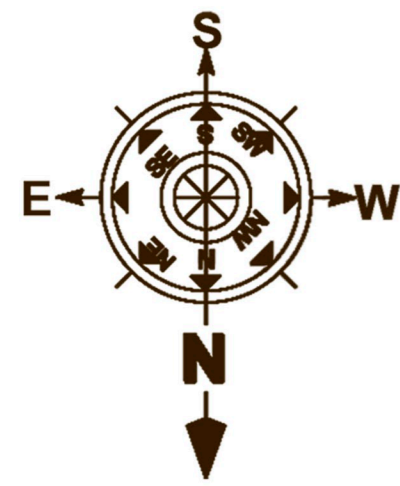
Video door

- Video doorphone for each flat

Generator backup for common areas

Rain water harvesting

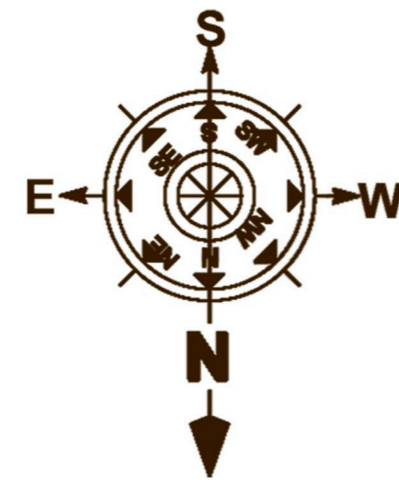
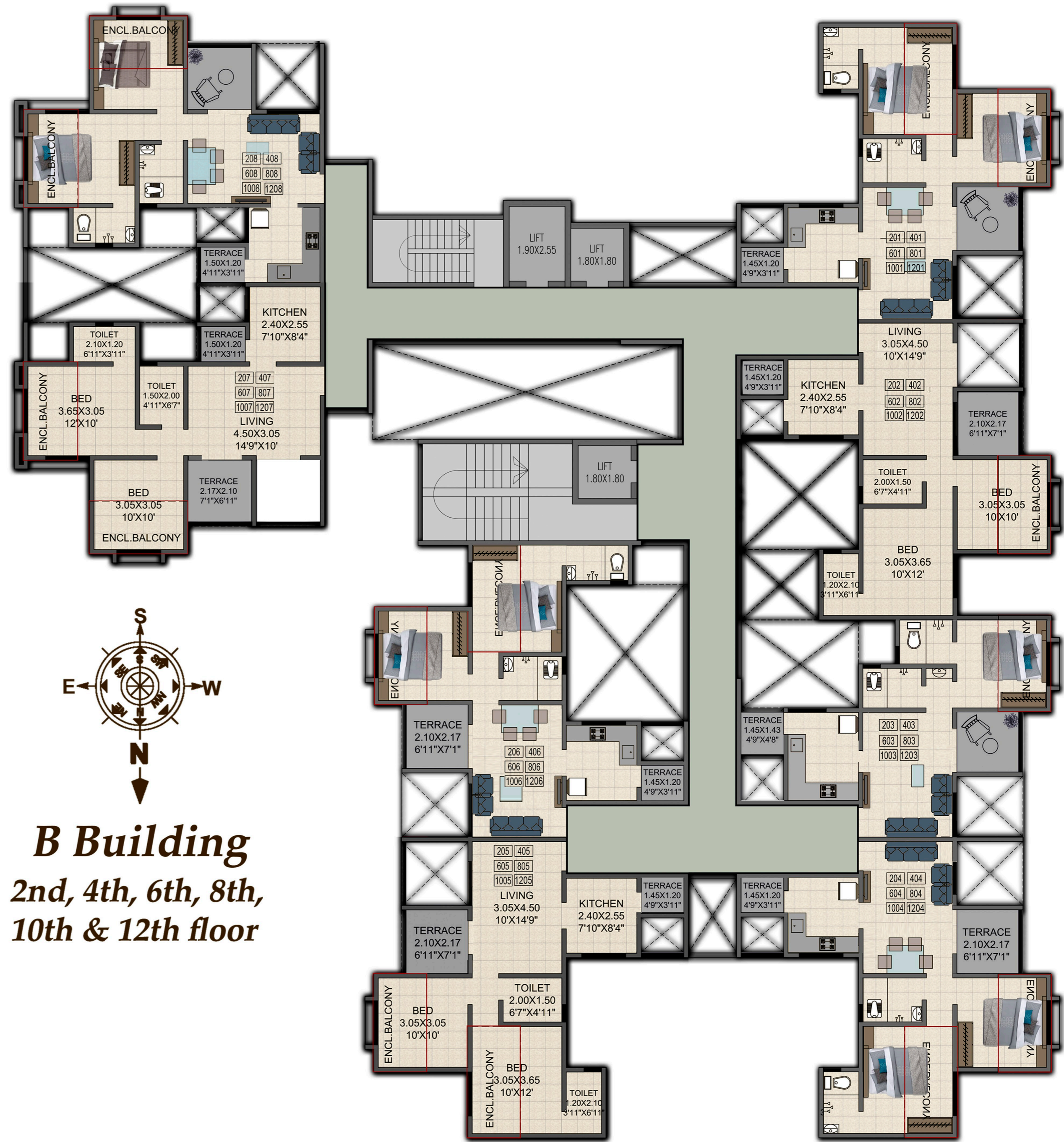




B Building

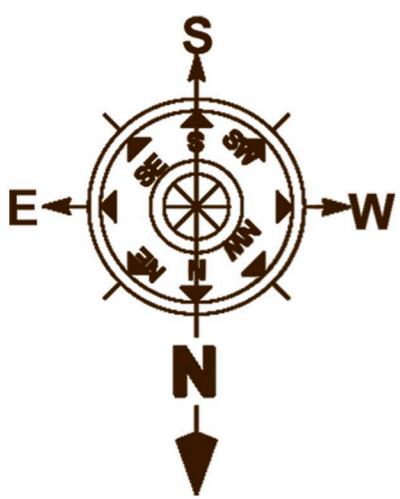
1st, 3rd, 5th & 9th floor

... Where Luxury meets Budget
Acorn Park

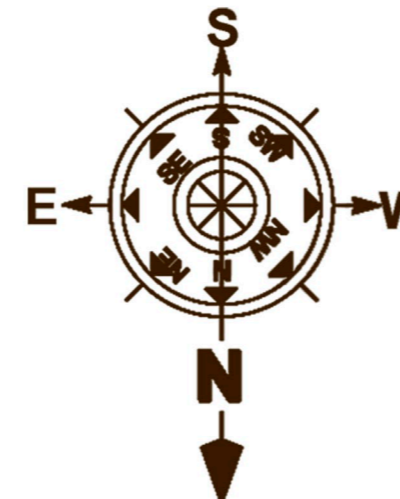
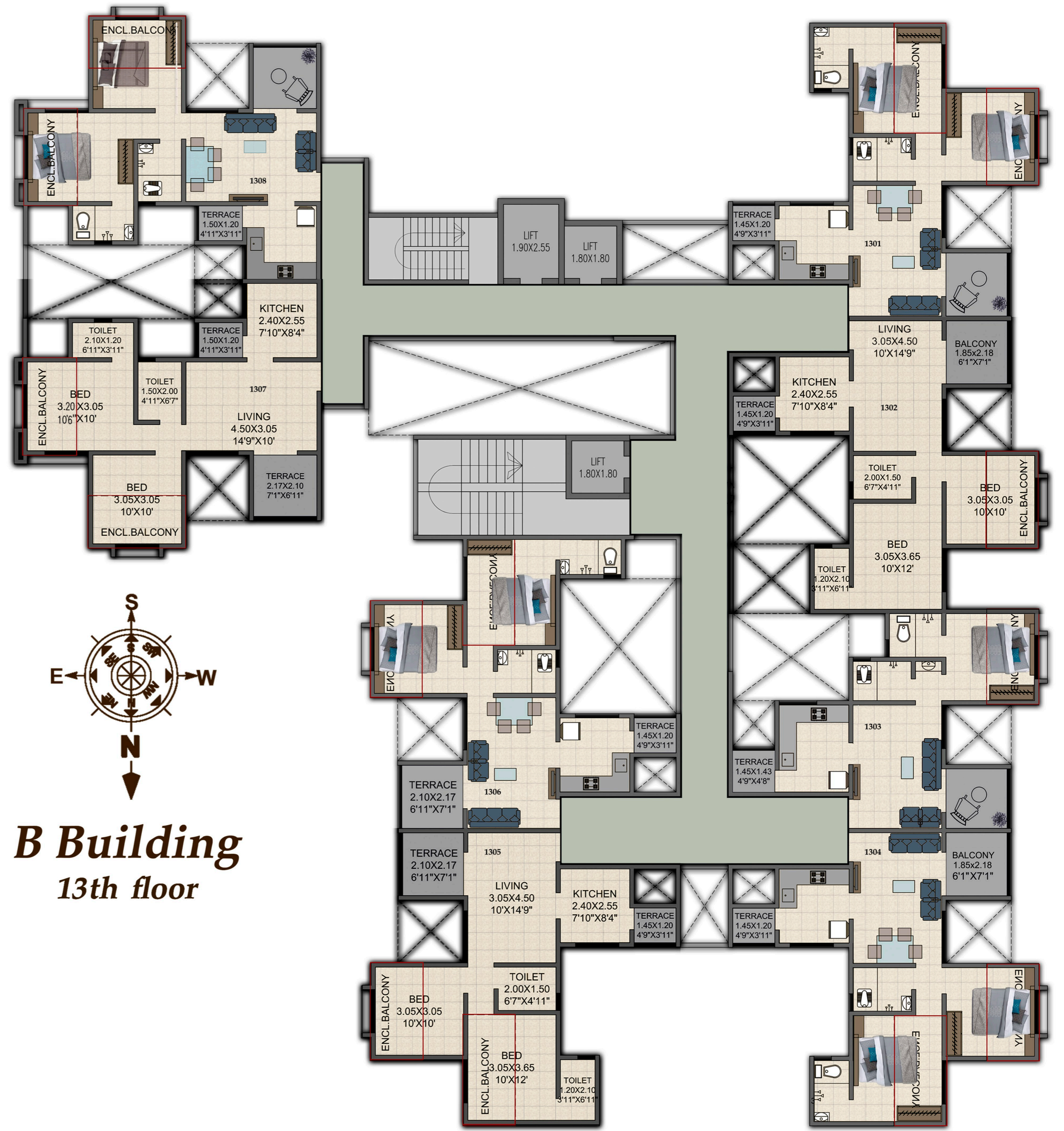


B Building

2nd, 4th, 6th, 8th,
10th & 12th floor



B Building
7th & 11th floor

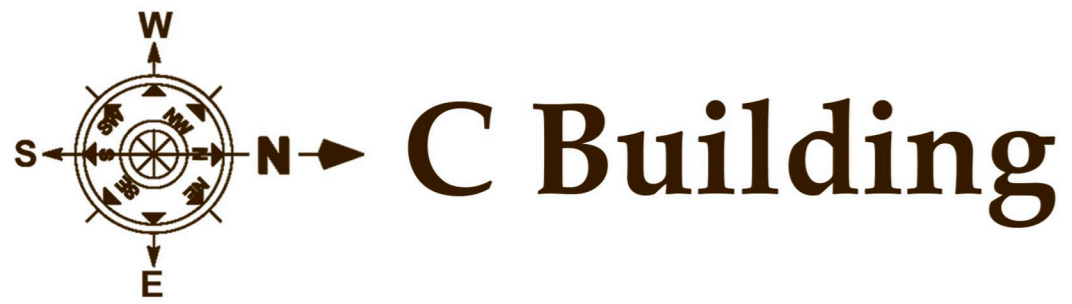


B Building
13th floor

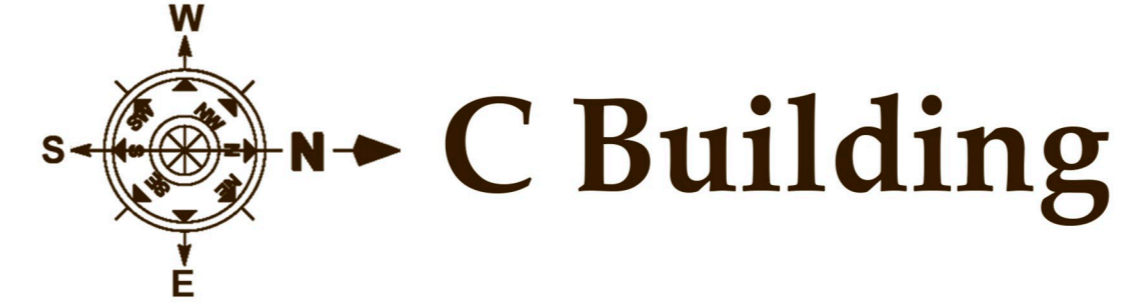
... Where Luxury meets Budget
Acorn Park



TYPICAL FLOOR PLAN
(1st TO 7th & 9th TO 12th & 14th floor)



REFUGE FLOOR PLAN
(8th. & 13th floor)

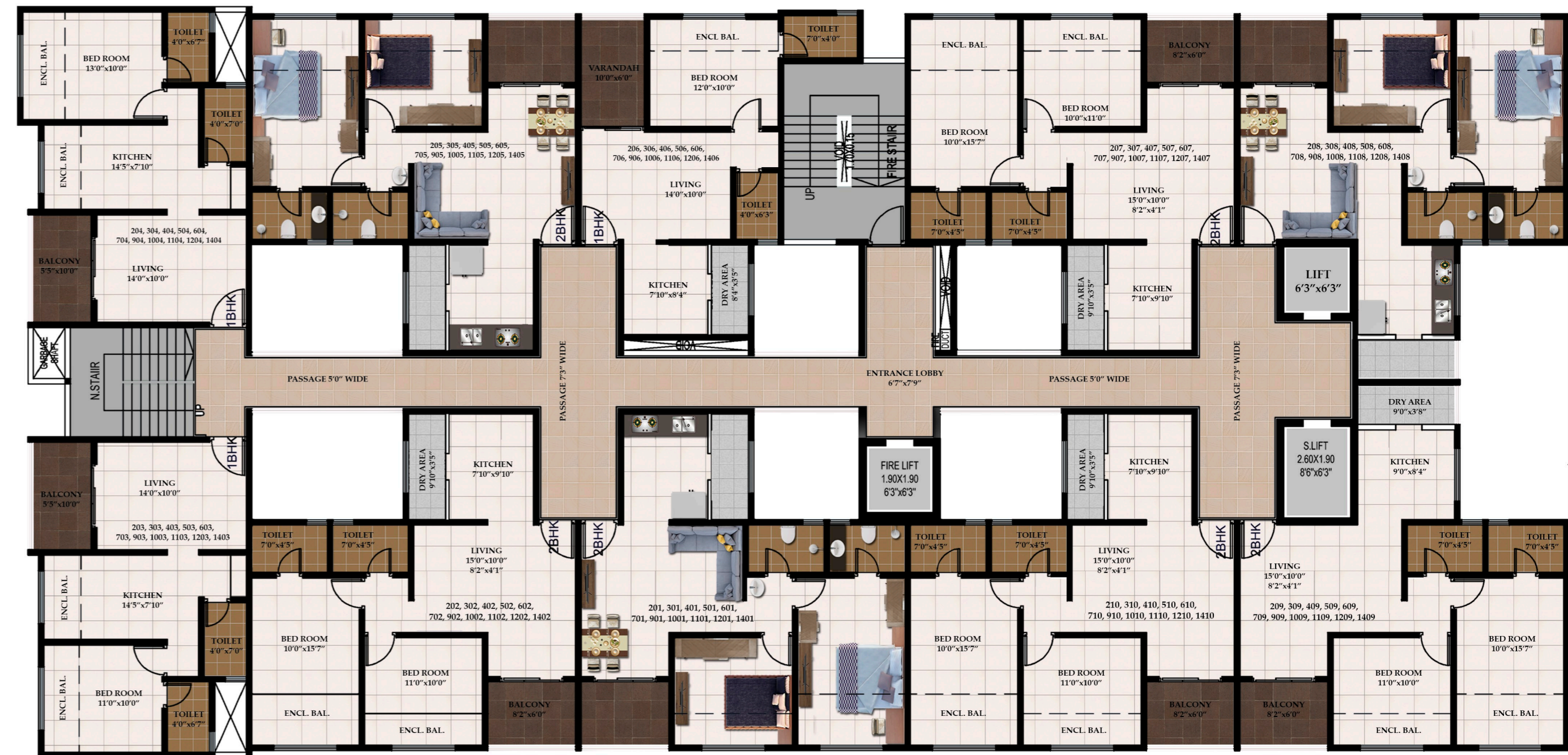


... Where Luxury meets Budget

Acorn Park



1st. FLOOR PLAN



TYPICAL FLOOR PLAN
(2nd TO 7th & 9th TO 12th & 14th floor)





REFUGE FLOOR PLAN
(8th floor)



REFUGE FLOOR PLAN
(13th. floor)

